



Oklahoma Clearinghouse
for EARLY CHILDHOOD SUCCESS



IMPACT REPORT

TABLE OF CONTENTS

Welcome Letter	3
Partners & Funders	4
Clearinghouse by the Numbers	5
Conscious Discipline Training	6
Pyramid Model	8
Quality Enhancement Initiative	9
AI's Pals	10
Early Birds	12
Early Learning Works (ELW)	14
Pioneer Library Growing Like A Read	16
Developmental Monitoring	17
Early Learning Matters (ELM)	18
Infant and Early Childhood Mental Health (IECMH)	20
OK-AIR	21
TBRI and Trauma Informed Classroom	22
Training Oklahoma Child Care Providers to Support Children with Autism (TOCA)	23
Outdoor Learning Environments	24

WELCOME!

On behalf of Oklahoma Partnership for School Readiness I am excited to present this impact report highlighting the tremendous achievements of the Oklahoma Clearinghouse for Early Childhood Success.

The Clearinghouse was created in 2020 in response to a fundamental question posed by then-Oklahoma Secretary of Human Services Justin Brown: 'What does quality mean in terms of child care?' Guided by this question, DHS brought together thought partners from across the state to explore the concept of quality in child care.

Through these discussions, they determined that quality is an ever-evolving concept—an aspirational 'true north' that providers continuously strive toward but never fully reach. Achieving and maintaining quality in child care requires ongoing dedication, effort, research, and collaboration. From this shared commitment, the Oklahoma Clearinghouse for Early Childhood Success was born.

The Clearinghouse is committed to continually advancing the definition of quality in early child care and education. This is accomplished by accelerating innovation, integrating research-based practices and conducting practice-informed research. The knowledge gained through our efforts is shared with parents, policymakers and child care providers all in pursuit of improving early childhood systems and maximizing public/private partnerships.

Our inclusive approach spans all early childhood care and education settings, including center-based care, home-based care, family, friend, and neighbor care, as well as programs like Head Start, Pre-K, and school-aged care.

This comprehensive focus positions the Clearinghouse as a vital resource for identifying and advancing programs through Implementation Grants or other funding sources, such as the Preschool Development Grant Birth through Five. By blending and braiding funds from OKDHS and private donors, OPSR has extended the impact of Clearinghouse projects statewide, improving outcomes for even more children.

Key support from the Oklahoma Department of Human Services (OKDHS), the Inasmuch Foundation, The Potts Family Foundation, and the George Kaiser Family Foundation (GKFF) has been instrumental in elevating early childhood best practices across Oklahoma. These partnerships ensure the Clearinghouse serves as a trusted resource for early childhood professionals, offering evidence-based strategies to promote school readiness and child well-being.

To date, 36 project submissions have been approved by the Clearinghouse, with 14 programs receiving implementation grants totaling more than \$8.6 million. These funded submissions have addressed needs ranging from social and emotional well-being to expanding early childhood mental health services to improving early literacy practices across the state.

To find the full list of all Clearinghouse projects, I encourage you to visit our dedicated website, okclearinghouse.org.



A handwritten signature in black ink that reads "Carrie Williams". The signature is fluid and cursive, written in a professional style.

Carrie Williams
Executive Director
Oklahoma Partnership for School Readiness (OPSR)

PARTNERS & FUNDERS

Executive Council

Mary Griffin
Project Director

Paula Gates
Co-Chair

Lana Beasley, Ph. D
Co-Chair

Mary McCoy, Ph. D
Co-Chair

Charlotte Hollarn, M. Ed
Co-Chair

Jeffrey Cartmell

Bob Ross

Sarah Roberts

Ginny Bass Carl

Annie VanHanken

Carrie Williams

Amy Emerson

Tyler Tokarczyk

Danielle Durke

Katie DeMuth

Oklahoma Human Services
Chief of Staff

Jaesha Quarrels

Oklahoma Human Services
Director of Child Care Services

Deborah Smith

Oklahoma Human Services
Deputy Director

Outcomes & Research Committee

Stacy Dykstra
Regional Food Bank of Oklahoma
CEO

Erin Maher, Ph. D
OU Health Sciences Center
Adjunct Associate Professor of Pediatrics

Lana Beasley, Ph. D
OSU Sciences Center
Director of Resilience, Adversity,
and Interventions

Marny Dunlap, MD
OU Health Sciences Center
Associate Professor of Pediatrics

Bonnie McBride, Ph. D
OU Health Sciences Center
Associate Professor & Director of
the Oklahoma Autism Center

LaDonna Atkins, Ed. D
University of Central Oklahoma
Professor, Family Life Education - Child
Development

Jennifer Stepp, Ph. D
Oklahoma State University
Associate Professor, Human Development
& Family Science

Brittany Zaring-Hinkle Ph. D
OPSR
Director of Research

Process & Implementation Committee

Paula Gates
Sunbeam Family Services
Chief Program Officer

Charlotte Hollarn, M. Ed
Cornerstone Child Enrichment
Center Director

Nancy vonBargen, MC
National Center on Early Childhood
Quality Assurance Consultant

Amber Cuyler
OPSR
Director of Child Care Resource
& Referral

Deborah Smith
Oklahoma Human Services
Deputy Director

Paula Brown, MAEd
Oklahoma Association of Community
Action Agencies
Oklahoma Head Start
Collaboration Director

Anthony Stafford
Sunbeam Family Services
Senior Program Director

Rachel Proper
Child Care Inc,
Vice President

Gabrielle Moon
St. Luke's Children's Center
Executive Director

Special Thanks

In addition to the people above, The Clearinghouse would not be what it is today without the vision and dedication of these partners:

Justin Brown, Caren Calhoun, Desiree Doherty, Adrienne Elder, Tricia Everest, Chan Hellman, Diane Horm, Craig Knutson, Lindsay Laird, Bonnie McBride, Mary McCoy, Tracy Meeuwssen, Helen Milojevich, Mary Myrick, Teresa Rose, Deborah Shropshire, Marnie Taylor, Emisha Young, Nancy Von Bargen, The Oklahoma Department of Human Services and countless other volunteers and partners.

BY THE NUMBERS



\$353,858

Pyramid Model



\$163,932

Developmental Monitoring



\$1,874,659

Conscious Discipline



\$244,044

Early Learning Works



\$653,655

Early Birds



\$124,999

IECMH Consultation



\$27,452

Growing Like
a Read



\$415,299

Air Quality in
Child Care



\$146,594

TBRI Training for Child Care
(Lilyfield)



\$349,704

Supporting Children
with Autism



\$1,008,821

Quality Enhancement Initiative



\$390,210

Al's Pals



\$282,585

Early Learning Matters



\$2,652,000

(\$902,000 expansion)

Outdoor Learning
Environments

The breakdown of total new implementation funding for FY24 of \$4,874,074.00 is as follows:

- 95% DHS funded (public) for \$4,651,866.60
- 5% Private funded for \$222,207.40

CONSCIOUS DISCIPLINE TRAINING



Sunbeam Family Services strengthened Oklahoma's child care workforce by offering Conscious Discipline training, an evidence-based early childhood wellbeing and life skills development program. Supported by a grant from the Clearinghouse, Sunbeam hosted week-long academies and two-day trainings statewide, aiming to reach 2,370 teachers, caregivers, and mental health professionals. Sunbeam provided virtual learning and Saturday training options to increase accessibility.

These highly engaging and successful trainings allowed Sunbeam to surpass their initial goals. As a result, Sunbeam trained 3,904 educators and certified five individuals as Conscious Discipline Endorsed Facilitators (CDEFs) to ensure program sustainability. These facilitators will continue to grow through annual consultations and professional development. With this foundation in place, Sunbeam is helping create lasting, positive change in the school readiness skills of children across Oklahoma.

Grant award

\$1,874,658.86

Cost per child impacted

\$37

Cost per training hour

\$56

Cost per provider

\$480

Investment per county

\$27,150



**SNAP
SHOT**

CONSCIOUS DISCIPLINE TRAINING



Hosted

4 week-long academies

4 Saturday sessions

10 two-day trainings

7 eight-session virtual series

50,666+

children impacted



3,904 educators trained

for a total of **33,508** hours

452

agencies were represented



69 out of

77 counties touched



5

conscious discipline endorsed facilitators



ALL

participants received implementation materials

PYRAMID MODEL



The Oklahoma Clearinghouse provided funding that enabled the Oklahoma Head Start Collaboration Office and the Oklahoma Association of Community Action Agencies to offer a series of online and in-person Pyramid Peer Learning Communities (PLCs) for licensed child care providers. These PLCs equipped child care staff with the resources and support they needed to complete their eModules and effectively implement the Pyramid Model in their programs.

The Pyramid Model is a comprehensive, multi-tiered framework of evidence-based practices that promotes the behavioral development of young children. This framework emphasizes supporting all children at the universal level, thereby decreasing the need for more intensive interventions.

Through funding and support by the Clearinghouse, trained facilitators led 39 PLCs—36 online and 3 in-person—reaching 565 providers across Head Start programs, Child Care Centers, Tribal Child Care Centers, and Family Child Care Homes. Of these, 271 providers were from rural Oklahoma, where child care deserts have the most significant impact on families.

The PLC participants who completed the program received a \$50 stipend and a Classroom Kit from Discovery Source. Additionally, 200 centers were awarded a turtle sandbox to create a “cozy corner,” a safe space where children can retreat when feeling overwhelmed, overstimulated, or dealing with strong emotions.

565
providers reached

QUALITY ENHANCEMENT INITIATIVE



Rainbow Fleet's Quality Enhancement Initiative (QEI) is a comprehensive training and resource program designed to improve early care and education in Oklahoma's Family Child Care Home (FCCH) settings, regardless of a child's financial, cultural, or family situation. Rainbow Fleet leveraged funds from

a Clearinghouse grant to establish three provider cohorts for Child Development Associate (CDA) training and National Association for Family Child Care (NAFCC) Accreditation.

A unique component of the QEI Project includes the Spanish-speaking CDA cohorts, which ran alongside the English-speaking cohorts. Instructors taught classes in Spanish and provided the CDA exam, CDA Competency Book, and Oklahoma Pathway to National Credential assignments in Spanish. In total, 32 native Spanish speakers enrolled in the CDA cohorts, and 71.8% earned their CDAs. Additionally, Rainbow Fleet partnered with the Thrive Network to create a self-paced, hybrid cohort, broadening access to high-quality training and helping more family child care home providers achieve accreditation to enhance early care and education quality.

With support from Clearinghouse and Thrive, Rainbow Fleet trained 182 individuals through the QEI Project. Nearly 82% of participants met the CDA or Accreditation requirements, and 52% received certification. Many participants work in child care deserts, where the QEI Project improved care quality for an estimated 1,062 children and their families. Additionally, the collaboration earned OPSR the NAFCC Accreditation Facilitator Award at their national conference, recognizing their significant contributions to the program.

1,062

children & their
families impacted



Al's Pals™
Kids Making Healthy Choices

Great Plains Child Care Resource & Referral (GPCCRR) expanded the influence of Al's Pals, an evidence-based life-skills learning curriculum designed for preschool children, with support from the Oklahoma Clearinghouse. The two-day trainings focused on equipping child care providers with the tools to foster nurturing relationships and create cooperative classroom environments. Each participant received Al's Pals curriculum kits, which include 46 core lessons designed to help children through connected learning practices that develop emotional resilience. To ensure successful implementation, GPCCRR provided ongoing technical assistance, coaching, and follow-up support, including personalized consultations to help providers grow the program within their facilities.

The program's success led to widespread interest across the state. GPCCRR facilitated 60 hours of formal trainings for 177 providers from at least 20 counties and created a network of child care professionals who continue to collaborate beyond the training. The program's impact extends throughout Oklahoma, supporting the school readiness skills development of preschool-aged children and building a strong foundation for future success.

"I started implementing this twice a week and the kids in my classroom love it and ask about when Al is coming to visit again!"

Donna Cox-Lemons



EARLY BIRDS



833
providers reached

With a \$653,655 grant from the Oklahoma Clearinghouse, Sunbeam Family Services led the Early Birds program, a free initiative for parents and early care providers of children under 5, focusing on child development, health, safety, and advocacy to improve school readiness skills.

Early Birds consisted of a series of training classes designed to enhance early care providers' skills. The grant also supported the distribution of STEAM kits, educational books, and a \$50 training incentive for participants. The program expanded its reach through both home and center-based child care providers, improving classroom materials and elevating the quality of child care statewide.



EARLY BIRDS



The program reached 833 providers across 57 Oklahoma counties, enhancing their ability to support children through connection-based activities. Additionally, 34 participants completed the Train the Trainer program, including 29 CCR&R Coaches and five Sunbeam staff. These trainers will now help expand the program by training more providers. Future sessions will continue offering professional development with CECPD-approved credit. Sunbeam Family Services' efforts have made a lasting impact on early childhood providers across Oklahoma, supporting the continued growth and school readiness of young children statewide.



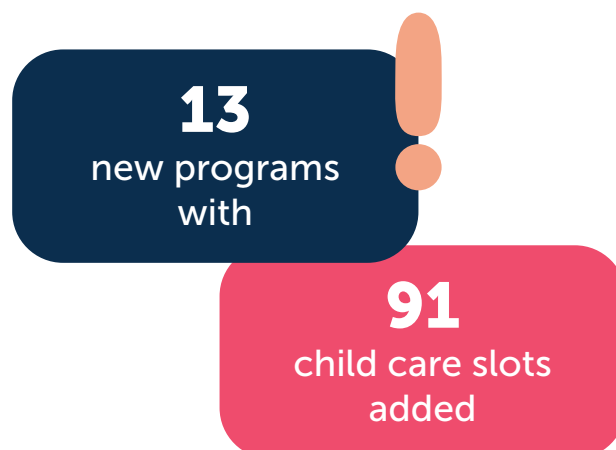
EARLY LEARNING WORKS (ELW)



Early Learning Works (ELW) NextGen, originally developed by Tulsa Educare and supported by a \$244,044 grant from the Oklahoma Clearinghouse, aimed to increase quality family child care homes in Tulsa. The program provided individualized support, paid training, and resources to 15 participants, helping them achieve licensure and business sustainability.

Thirteen providers (86%) completed the program, with 8 achieving 5-Star ratings and 5 working toward 3-Star levels. The providers opened 13 new family child care homes, adding 91 child care slots in Tulsa. Although two participants faced challenges and dropped out, all remaining providers have the capacity to care for at least seven children each.

To ensure long-term success, ELW created the Next Generation Early Learning Works Road Map, a handbook for replicating the project. ELW shared the road map with OPSR and will make it available on the ELW website to guide future efforts.



EARLY LEARNING WORKS (ELW)



PIONEER LIBRARY GROWING LIKE A READ



The Pioneer Library System's (PLS) Growing Like a Read initiative, in partnership with the Clearinghouse, has been actively promoting early literacy for children from birth to age five. Starting in August 2023, PLS distributed 1,170 literacy kits across 12 library locations. Each kit included a tote bag, a rhyme book, information about Dolly Parton's Imagination Library, and a feedback form.

Throughout the fall, staff delivered the kits to children and caregivers after story times at child care centers. Families have given overwhelmingly positive feedback, expressing appreciation for the support in developing early literacy skills at home. The project wrapped up in December 2023, successfully fostering key pre-reading skills in young children across the PLS service area.

1,170
literacy kits
delivered



DEVELOPMENTAL MONITORING



The Oklahoma Autism Center led a free, four-part training series on Developmental Monitoring to help early care providers identify and support children with developmental delays. Participants viewed the CDC's Learn the Signs. Act Early video. They participated in follow-up discussion sessions tailored to their needs.

Around 120 providers across 38 cities and 25 counties in Oklahoma participated, impacting 2,593 children. The training included both large child care centers and small home-based providers, and proved valuable for identifying early signs of developmental delays in both rural and urban areas.

The series fostered community-building through facilitated discussions, and providers received resources and tools to help with continued implementation. Participants gave overwhelming positive feedback, highlighting the value of connecting with peers. Overall, the training exceeded expectations, boosting participants' knowledge and fostering professional growth across the state.

2,593

children impacted

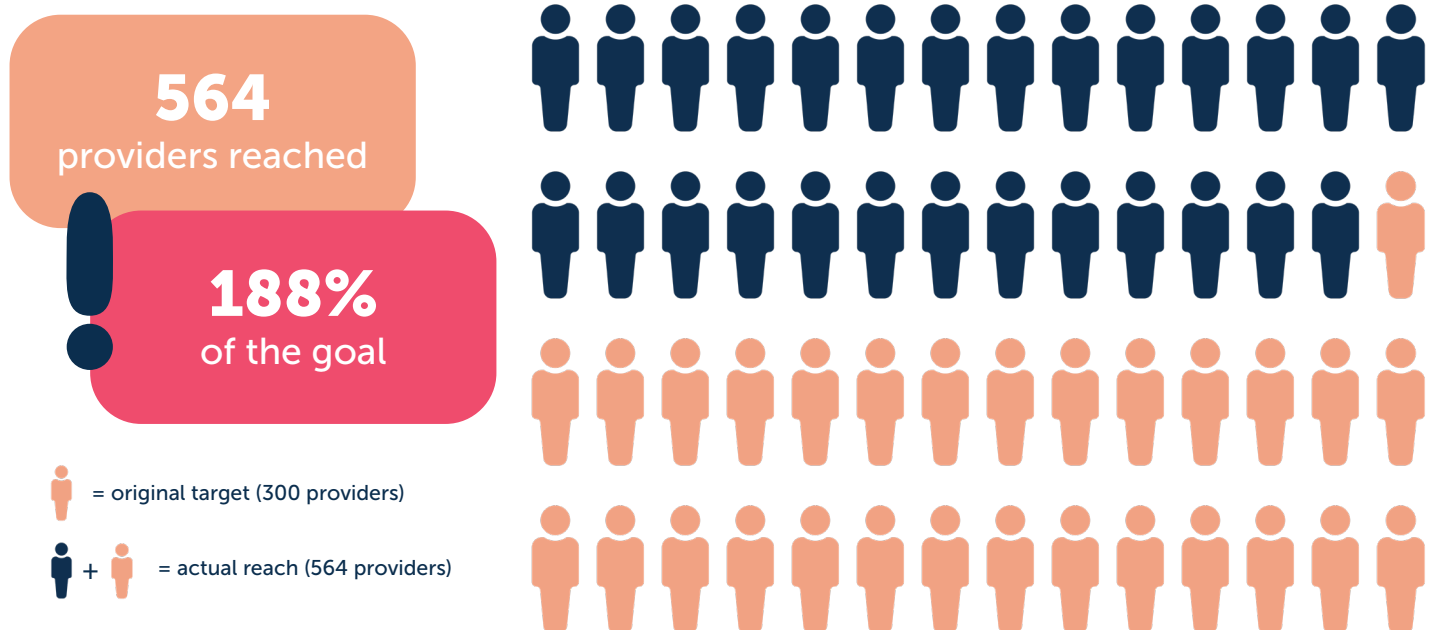


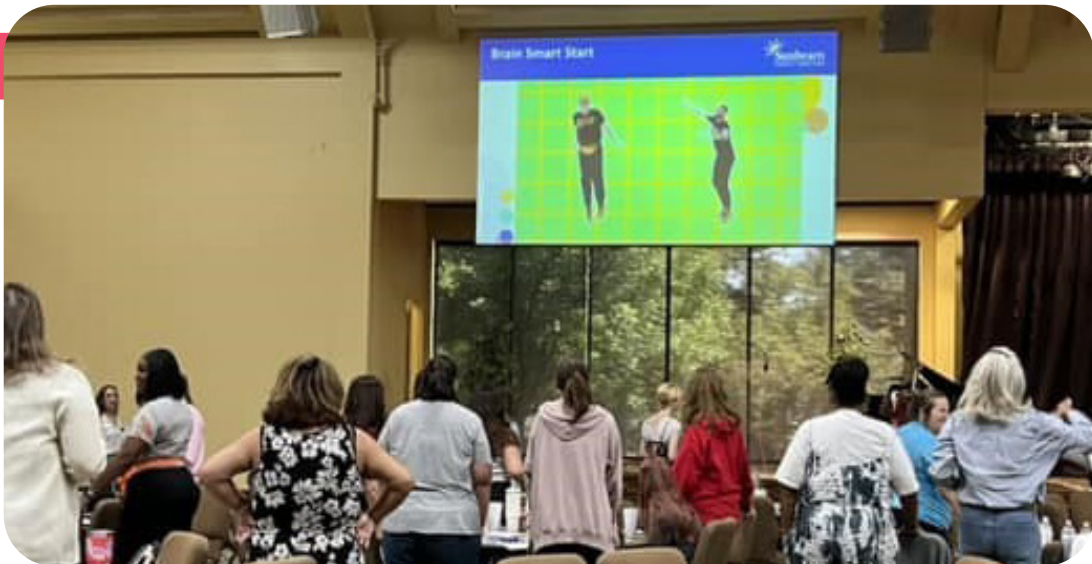
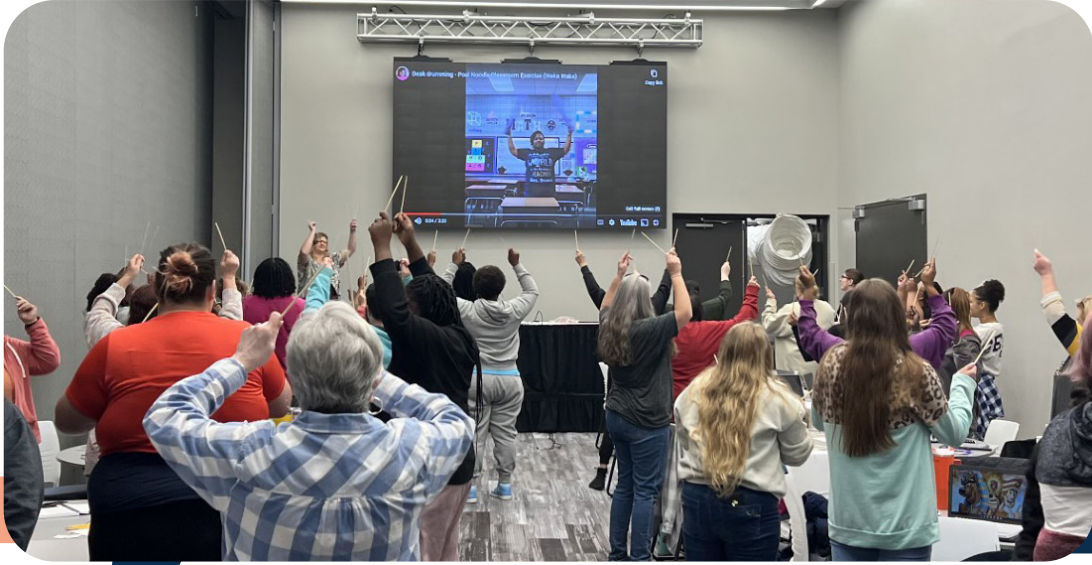
EARLY LEARNING MATTERS (ELM)

Sunbeam Family Services received a \$282,584.51 grant from the Clearinghouse to provide training sessions for Oklahoma child care providers to implement Early Learning Matters (ELM), a research-based curriculum available for free. ELM equips providers with tools like scaffolding tips, guided play suggestions, and anticipatory guidance for working with young children. To improve accessibility, Sunbeam translated the curriculum into Spanish and aligned it with Oklahoma Department of Human Services (OKDHS) Child Care Licensing requirements.

Originally targeting 300 providers, the project exceeded expectations by reaching 564 providers statewide—188% of the goal. In addition to training, Sunbeam created a private Facebook group for ongoing support, enabling providers to share experiences and ask questions. Sunbeam distributed 30 ELM curriculum kits to further enhance implementation success.

Aligning ELM's activity plans with Oklahoma Early Learning Guidelines saved teachers time while helping them meet state licensing requirements. This project has strengthened partnerships with child care homes and centers across the state, helping to improve early childhood education in Oklahoma.





INFANT & EARLY CHILDHOOD MENTAL HEALTH (IECMH)

Western Plains Youth and Family Services received a grant to expand Infant and Early Childhood Mental Health (IECMH) Consultation services in Northwest Oklahoma. The project aimed to strengthen consultative support, expand the team of consultants, and provide training to improve outcomes for children and families. Additionally, it focused on offering behavioral support in child care programs and schools to reduce DHS referrals and connect families with resources such as Systems of Care. Hiring bilingual consultants made it possible to extend services to rural schools and child care programs.

The project focused heavily on trainings, with a play therapy cohort preparing nine therapists to become Registered Play Therapists, three Circle of Security sessions for 29 early childhood professionals, and workshops on autism and child behavior for Headstart staff and local educators. With support from the Oklahoma Clearinghouse, Western Plains Youth and Family Services significantly expanded IECMH in Northwest Oklahoma, laying the foundation for continued support over the next three years.



OK-AIR

OK-AIR, a project of the Early Childhood Education Institute at the University of Oklahoma, aimed to determine if low-cost air cleaning devices could improve air quality in early childhood environments and positively impact the health of both teachers and children. The project involved five Head Start and Early Head Start centers, benefiting 206 children, 56 teachers, and five site directors.

The Oklahoma Clearinghouse provided funding for the installation of air filtering and UV light scrubbing systems. Once installed, researchers then collected data on absenteeism, child life-skills development, and health through focus groups and teacher knowledge assessments. Parents, teachers, and directors completed surveys for review, as well. The team installed air quality monitors to track key air quality variables, including TVOCs, NO_x (common air pollutants), noise, temperature, and humidity.

Early outcomes suggest that improving air quality may reduce absenteeism and support positive health and development outcomes for both children and teachers. OK-AIR aims to further analyze the data to provide evidence that air quality interventions in early childhood settings lead to healthier, more productive environments. The project also gained recognition in the field, with an accepted abstract at the American Industrial Hygiene Conference (AIHA CONNECT) 2024 and Indoor Air 2024, and a poster session presented by Administration for Children and Families (ACF) National Research Conference on Early Childhood (NRCEC) in June 2024.

206

children impacted

TBRI AND TRAUMA INFORMED CLASSROOM



Lilyfield

Utilizing a \$146,593.98 grant from the Oklahoma Clearinghouse, Lilyfield of Oklahoma offered Trust Based Relational Intervention (TBRI) and Trauma-Informed classroom training to child care providers. These programs, informed by neuroscience and sensory processing, aim to disarm fear, enhance learning, and promote healing for children that have experienced trauma.

In addition to training, Lilyfield provided consultation and support to providers caring for children in state custody facing complex needs due to early trauma and adversity. A total of 14 teachers and directors, 26 classrooms and 44 providers participated, receiving resources such as self-regulation tools, sensory items, and materials for social-emotional learning and development.



14

teachers & directors
received training



26

classrooms
received resources



44

providers
received training

After completing the program, Lilyfield referred parents and providers to its EmpowerParents program for additional support, including classes, support groups, and one-on-one mentoring. Lilyfield's comprehensive training and support have empowered providers across Oklahoma to better meet the complex needs of children in state custody, fostering healing and growth in classrooms statewide.

TRAINING OKLAHOMA CHILD CARE PROVIDERS TO SUPPORT CHILDREN WITH AUTISM (TOCA)



AUTISM
FOUNDATION
of OKLAHOMA

The Autism Foundation of Oklahoma (AFO) led the Training Oklahoma Child Care Providers to Support Children with Autism (TOCA) program to improve autism awareness and help providers create more inclusive environments for children with autism. The Oklahoma Clearinghouse funding allowed 400 participants to complete comprehensive training, including virtual and in-person courses, which resulted in a 30% increase in knowledge of autism.

Participants received valuable resources such as the Autism Resource Guide, sensory kits, and self-regulation tools to enhance classroom support. ASCEND consultants reported a perfect 100% satisfaction rate, reflecting the program's success in equipping providers with the skills to support children with autism. Through this initiative, AFO has significantly strengthened child care practices across Oklahoma, building a network of trained consultants and improving autism care in early childhood settings statewide.

30%

increase in autism
awareness



OUTDOOR LEARNING ENVIRONMENTS

The Oklahoma Partnership for School Readiness Foundation (OPSR) invested \$2.6 million awarded by the Oklahoma Clearinghouse for Early Success to improve outdoor learning environments at 29 licensed child care programs, with an additional site privately funded by Blue Cross Blue Shield. The grant supported the construction and refurbishment of playgrounds designed to foster physical, cognitive, and emotional development through play and exploration.

The initiative aimed to create lasting benefits for Oklahoma's children by providing them opportunities for outdoor learning, which helps improve focus, reduces the need for intervention and encourages better behavior. Children with access to these environments tend to show significant improvements in science scores and problem-solving skills. OPSR initially planned to fund 20 sites but expanded the program to include 30 locations across Oklahoma due to the incredible demand for this program which garnered more than 190 applications from 55 of Oklahoma's 77 counties. The expansion was made possible through a mix of public and private funds. By expanding access to quality outdoor play spaces, OPSR is helping lay the foundation for every child in Oklahoma to thrive and reach their full potential.

"We were absolutely thrilled to be able to be selected for this project. We had a playground that was not very functional. I really hope that the initiative of the outdoor learning environments will become standard child care practice across the board."

Mandi Coleman
Director, St. Luke's Children's Center,
Oklahoma City

190
applications from
55 counties

Grants were awarded to the following child care providers for outdoor learning environments:

Scan the QR code to view a video of this program



Tulsa Metro Region:

- Early Stages Childcare (Tulsa, OK)
- Homespun Early Learning Center LLC (Claremore, OK)
- Jennifer's Family Childcare (Glenpool, OK)
- Jewel's Place Enrichment Childcare (Tulsa, OK)
- Spring Butler's Family Child Care Home (Wagoner, OK)



Oklahoma City Metro Region:

- Acorn Children's Center (OKC, OK)
- Alma's Little Clubhouse Daycare (OKC, OK)
- Britton Nursery School (OKC, OK)
- Kids USA (Moore, OK)
- Kinder Castle, Inc. (Midwest City, OK)
- NuNu Bear's Daycare, LLC (OKC, OK)
- Special Care, Inc. (OKC, OK)
- St. Luke's Children's Center (OKC, OK)
- Yexenia's Family Child Care Home (OKC, OK)



North Central Region:

- ABC's & 123's Learning Academy (Ponca City, OK)
- Mack's Final Frontier (Guthrie, OK)
- Stephanie Goen's Family Child Care LLC (Stillwater, OK)



Northeast Region:

- Bear's Cub House (Sallisaw, OK)
- Jean Parker Family Child Care Home (Tahlequah, OK)
- Whiteley Round-Up Daycare (Westville, OK)



Northwest Region:

- Debra Hansel Active Learners Daycare Home (Alva, OK)
- Step into Learning LLC (Yukon, OK)



South Central Region:

- Kids R Us of Tecumseh (Tecumseh, OK)
- Thrive Early Learning Center (Purcell, OK)
- Tina Robertson Family Child Care Home (Newcastle, OK)



Southeast Region:

- Kids Ranch Childcare (Broken Bow, OK)
- Lil Tykes Learning Center (Hugo, OK)
- See/Saw Learning Center (Durant, OK)



Southwest Region:

- Lil' Angels Daycare of Elk City (Elk City, OK)
- Little Explorers (Duncan, OK)

OUTDOOR LEARNING ENVIRONMENTS

“When OPSR chose me for an outdoor learning environment I cried! Our kids are just going to love it and we’re going to be able to provide a safer environment for the children to learn.”

Jennifer Schultz,
Owner, Director Lil Angels Day Care
Elk City



OUTDOOR LEARNING ENVIRONMENTS



“When OPSR chose Kindercastle to receive this playground grant for an outdoor learning environment we felt like we had won the lottery! It’s the first and only grant that we have ever received. It feels like a grand prize...a dream come true. It’s a dream I’ve had for 32 years for this facility and we are very, very excited for it.”

Vicki Duggan
Program Director, Kindercastle
Midwest City

Oklahoma Clearinghouse
for EARLY CHILDHOOD SUCCESS



www.okclearinghouse.org

